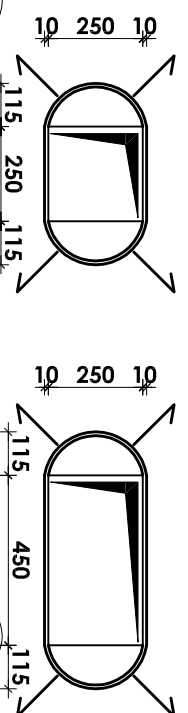
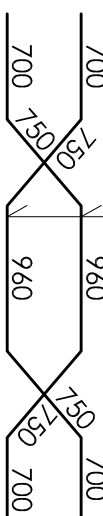


okucie otworu

Skala: 1:20

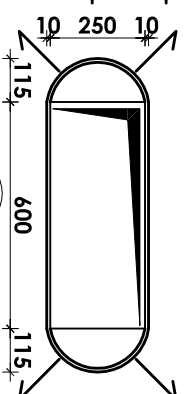


NR 7 4#14; l=3860mm

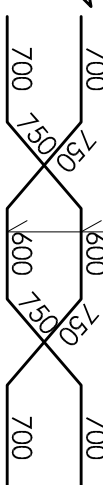


okucie otworu

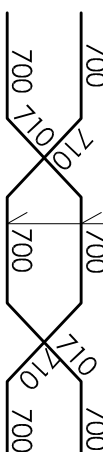
Skala: 1:20



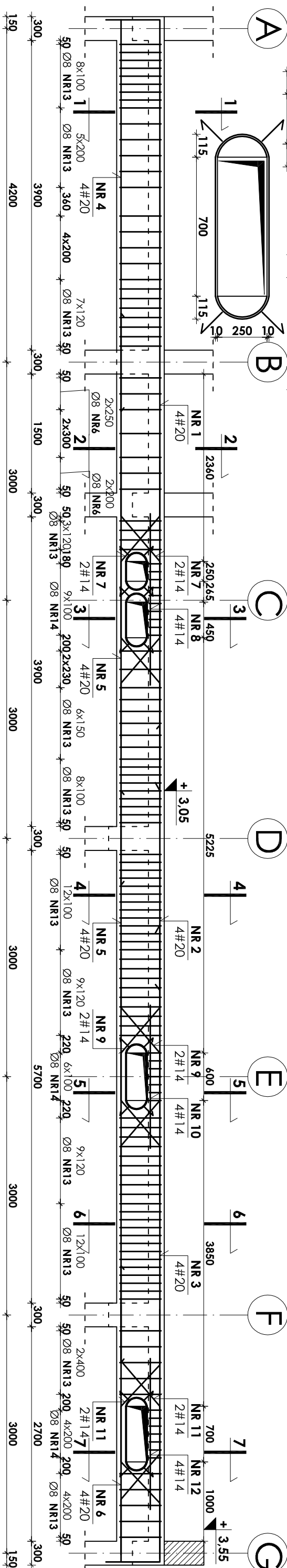
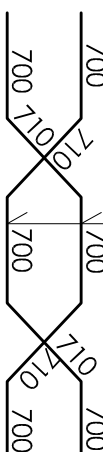
NR 9 4#14; l=3500mm



NR 11 4#14; l=3520mm



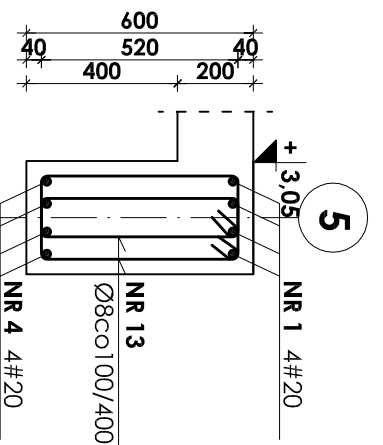
NR 12 4#14; l=1900mm



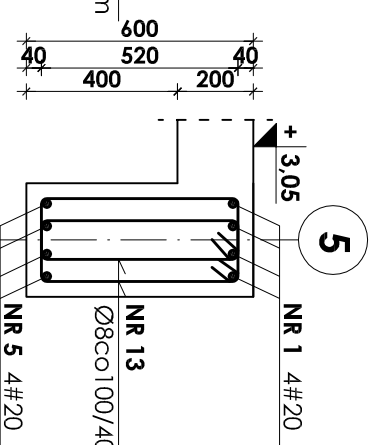
Belka poz. 5.2.6 szt. 1

Skala: 1:50

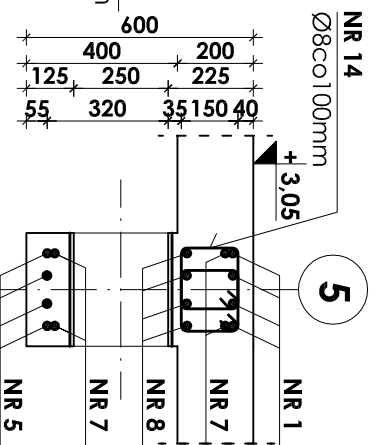
1-1 skala 1:20



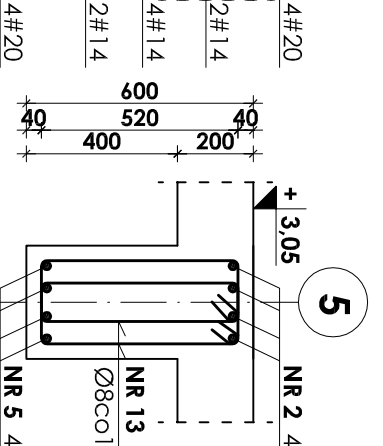
2-2 skala 1:20



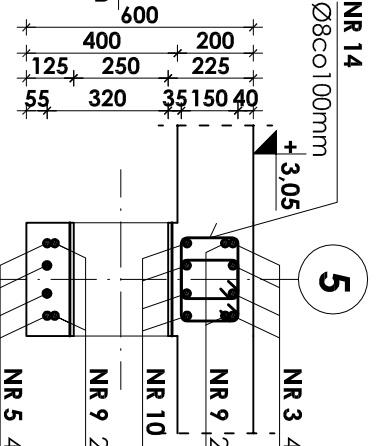
3-3 skala 1:20



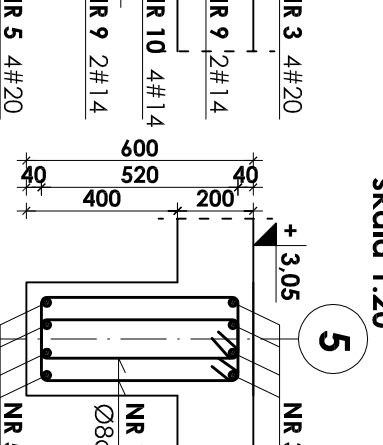
4-4 skala 1:20



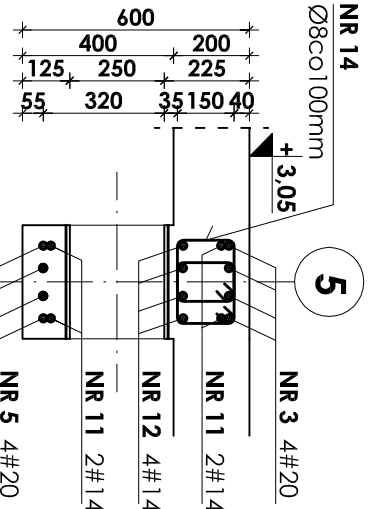
5-5 skala 1:20



6-6 skala 1:20



7-7 skala 1:20



Beton B37
Stal # A-III (BST-500S)
Stal Ø A-0 (StoS)

- UWAGI:
1. Otułina prętów zbrojenia wynosi 3cm.
2. Rysunek ten należy rozpatrywać łącznie z rysunkiem zbrojenia i deskowania płyt stropowych poszczególnych kondygnacji.
3. Zestawienie stali na odrębnej stronie.

Table with project details including investor (Gmina Strzelin), title (Budowa krytej pływalni w Strzelinie przy ul. Okulickiego), architect (DKT EXPERT), and scale (1:50).